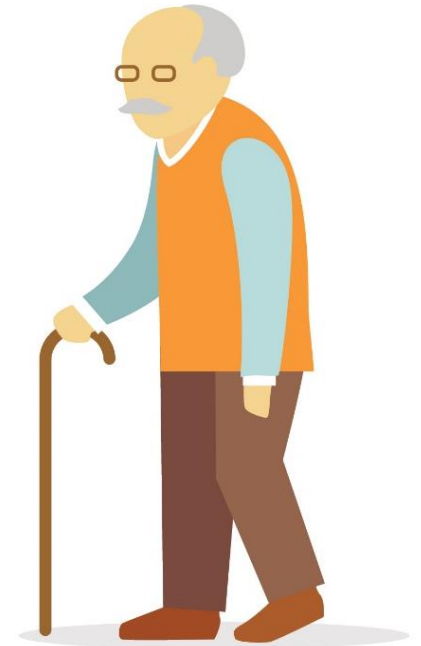


Case study 4 - Bill (residential care home)



- Bill lives in a residential care home. He moved there when his wife died as a social worker assessed him and didn't think he should live alone.
 - *What information did the social worker need?*
- He takes about 8 pills a day for various things (he doesn't know what as the carers give them to him).
- One night he has a fall and needs to go to hospital for a few days.
 - *What information does the hospital need to look after him?*
- He is sent home with pain killers which must be taken with food and instructions to go to his GP to have his stiches taken out in a week.
 - *What information does the care home need?*
 - *What information does the GP need?*



Case study 5 – Mrs Jones (care at home)



- Mrs Jones finds it hard to wash and get dressed and is increasingly forgetful. The care assessor who was sent by the council developed a care plan with Mrs Jones and her social worker.
 - - *What information does the care assessor and social worker need?*
- The care plan means that Mrs Jones will have carers from a local provider to visit her twice a day to help.
 - - *What information does the local provider need?*
 - - *What information do the carers need when they visit?*
- One day Mrs Jones found it hard to breath so she went to hospital by taxi. She was admitted and put on antibiotics for a chest infection.
 - - *What information does the local care provider need whilst she is in hospital?*
- She is sent home and has to keep taking her antibiotics for two weeks. Before her discharge from hospital, her care plan is updated by the social worker.
 - - *What information does the social worker need?*
 - - *What information does the local provider need?*
 - - *What information do the carers need?*

Case study 6 – Sue (nursing home)

- Sue has advanced Parkinson's disease. She needs a lot of care so she lives in a nursing home. She had a history of depression earlier on in her life and this is included in her GP notes.
 - *What information do the nursing staff need day to day?*
 - *What information do the other care staff need day to day?*
- Sue has previously agreed with nurses and doctors what she wants to happen as she approaches the end of her life.
 - *Who needs to have access to this information?*

